

WELCOME TO OUR 2018



Herne Bay Residents Association Incorporated

ANNUAL GENERAL MEETING (AGM)

INTRODUCTION & AGENDA

Councillor Mike Lee

HBRAI Activities

Sentinel Beach Helipad – Don Mathieson co-chair HBRAI

Traffic changes cycle initiatives – Don Mathieson

We will also cover cycling projects and parking in our suburb

Cleaning the Beaches and Harbours – Dirk Hudig co-chair HBRAI

AGM which will be run at the end of night in a speedy and efficient manner – NB: we need a quorum of 15!



Herne Bay Residents Association Incorporated

Councillor Mike Lee



Herne Bay Residents Association Incorporated

Chairs Report



- Don Mathieson co-chair
- Herne Bay Residents Association Inc.



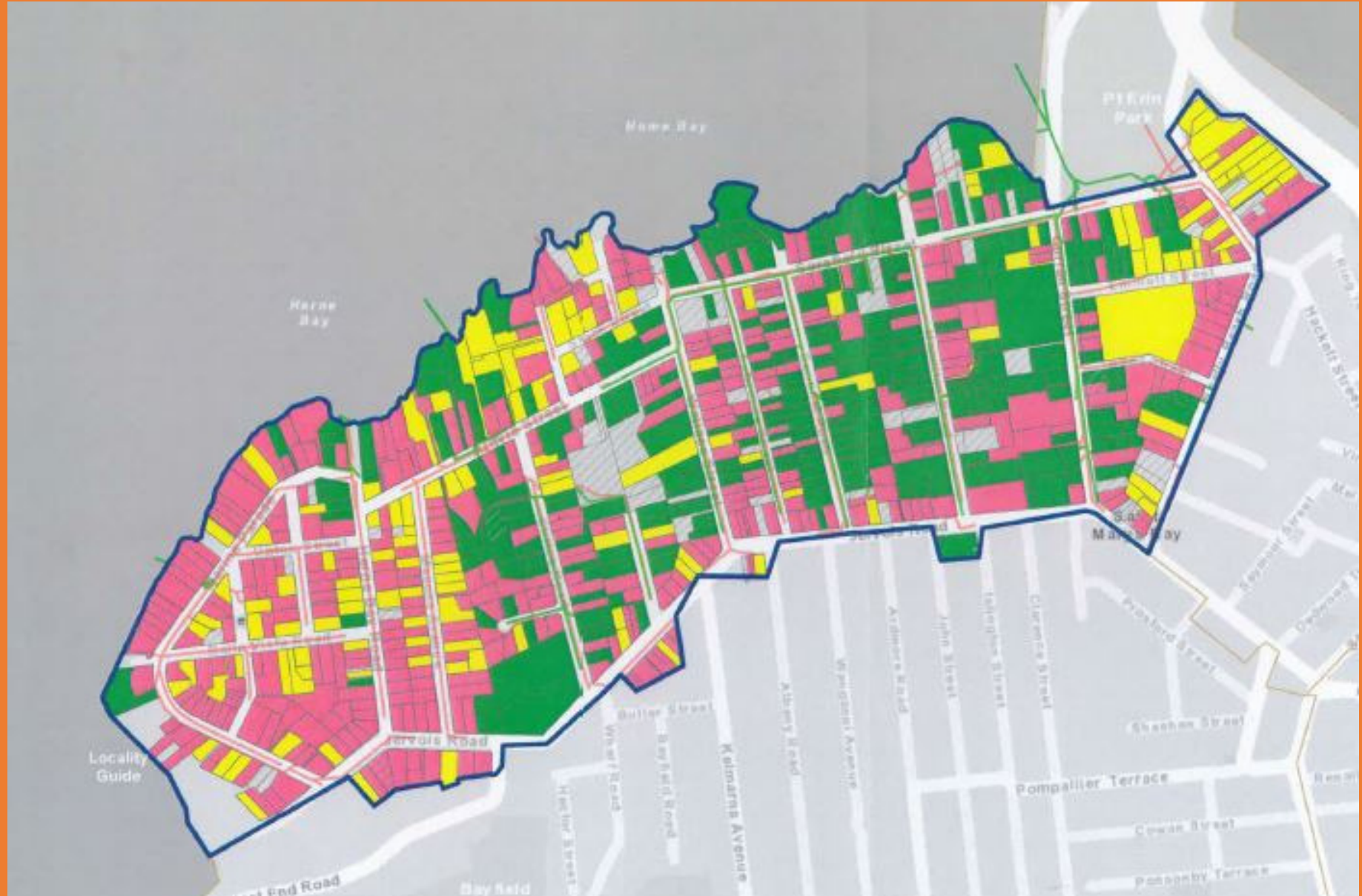
Herne Bay Residents Association Incorporated

HBRAI carried out a separation Survey to identify the amount of work required to connect all dwellings etc in Herne Bay to a separated system for removing storm water and sewage in separate piping.

Alistair McLaren did this work.

Council have accepted that its records are substantially wrong

Council will be checking every property soon, please cooperate as much as you can with them, it won't take long.





Herne Bay Residents Association Incorporated

- Art Deco Protection for Buildings
- Corner of Wallace Street
- Marian Kohler is responsible for this initiative
- Heritage New Zealand with cooperation of
- Heritage architect Graham Burgess
- Marian also working with council on replacement of street trees



Hall Salisbury Park / Argyle Street
Council bought it in 2010 1.5 million
Done nothing with it
They say its too expensive to convert to use
Plan to remove it and replace with grass
Can use Petanque Club instead otherwise Ponsonby Community
Centre











Other Issues We Have Been Working On

Submissions to Auckland Transport

Joint Public Meeting in May with SMBA

Meetings with Council and Watercare on water quality

Helicopters on Beaches

Traffic calming cycle way project Northern Streets

Existing Coastal Permit
Modify Existing Boatshed
Beach not part of the decision
on Notified Resource Consent
Wooden Piles to be retained
not a Boatshed Anymore



Sentinel Beach

The Existing Sheds

Court Action Hero Andy/Herc Coleman
- Stop unnecessary development in CMA
AI joined KIA common objectives
notification and Issuing Consent
an Chappell Barrister Council and Developer
0 pages of evidence
sion pending
ct there will be an appeal
ling the appeal info@hernebay1011.nz



The New Shed as Permitted



Next Steps

Written to CAA regarding safety concerns

No application has been made at this time

Application required under CAA part 157 if 7 or more flights per 30 days

Application to CAA required under Resource Consent

CAA advise we will be consulted as interested persons

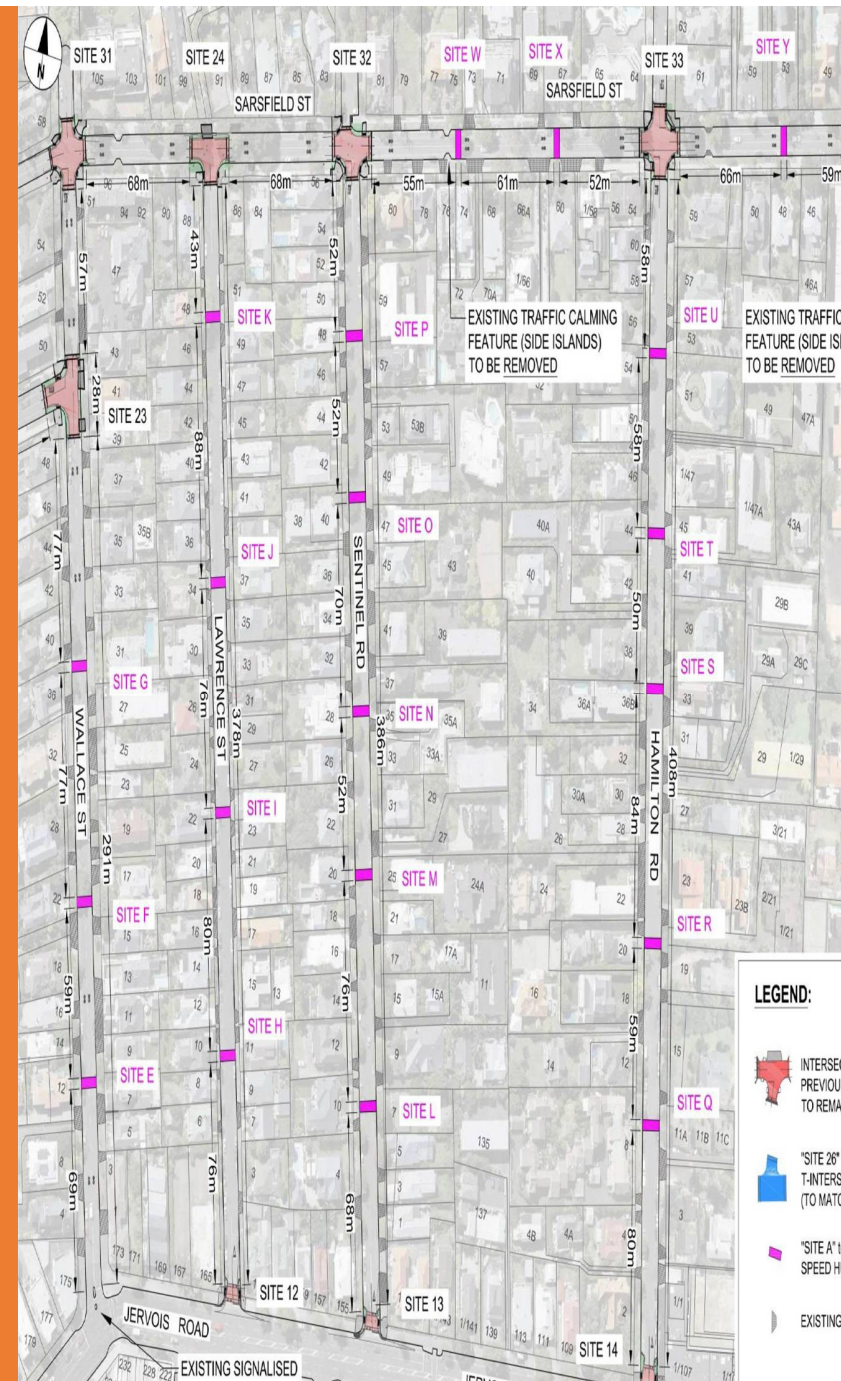
Conditions apply – log book, 50dBa Ldn per week or 53dBa Ldn per day,
three flights per week, no more than one per day.

Vernon Tava at the Local Board has agreed to discuss future applications with us.

If High Court Review is unsuccessful will be working with Mike Lee to effect a change to the Unitary Plan regarding notification and recognition of the amenity effects on CMA.



Changes in Northern Streets Cycling



Revised Plans for Safe Walking and Cycling

Sinusoidal Humps
Saves 42 Car Parks!
No Narrowing
30Km/hour











Next Steps

Remind AT they agreed to a safety report on the Sarsfield Curran St Intersection

Contact them regarding widening left turns

Project is due to start March 2018

Inconvenience expected during construction should be less due to less mid street construction.

Show support at meeting.



- Dirk Hudig co-chair
- Herne Bay Residents Association Inc.

“I don't think it is acceptable in New Zealand in 2017 that contact with recreational water can kill you”

Professor Michael Baker University of Otago



HARBOUR POLLUTION – THE PROBLEM

BACKGROUND

2.2 million CuM of sewage/stormwater overflows from the Combined Sewer (CS) system annually.

A combined Wastewater/sewage/Stormwater system must have overflow points as safety valves.

Cox's Bay and the Meola catchment outfalls account for the majority of CS overflows which occur over 50 times annually. Both have permanent pollution warnings.

The Kelmarna Stream has had E Coli readings of 190,000. The maximum reading for safe contact recreation – swimming/water sport - is 450.

HARBOUR POLLUTION – PROPOSED SOLUTIONS

The Western Isthmus Water Quality Improvement Plan (WIWQIP) is expected to reduce overflows to no more than 6 annually and greatly improve water quality in the Kelmarna Stream and Cox's Bay.

The Central Interceptor (crucial to WIWQIP) currently at the contracting stage is planned to be operational in eight years.

The Central Interceptor will run from Countdown Richmond Road to pick up the Cox's Bay outfalls and run via Western Springs and Mt Albert to the Mangere Treatment Plant.

Currently the only approved project to directly improve Herne Bay coastal CS overflows is the St Marys Bay/Masefield (SMBM) Project which has been costed at \$44 million.

HARBOUR POLLUTION – PROPOSED SOLUTIONS

The SMBM project proposes a 2500 cu M underground 1.8 metre diameter holding pipe from St Marys Bay to Masefield Beach. The pipe will collect CS overflows and stormwater from the network.

This Combined Sewer pipe will empty by pumping back to the combined (undersized and obsolete) 330 mm diameter trunk sewer when capacity becomes available after rain stops.

There is a disagreement between Watercare and Healthy Waters about the pump-back. Watercare do not want the extra stormwater at the Treatment Plant because of operational limits.

HARBOUR POLLUTION – PROPOSED SOLUTIONS

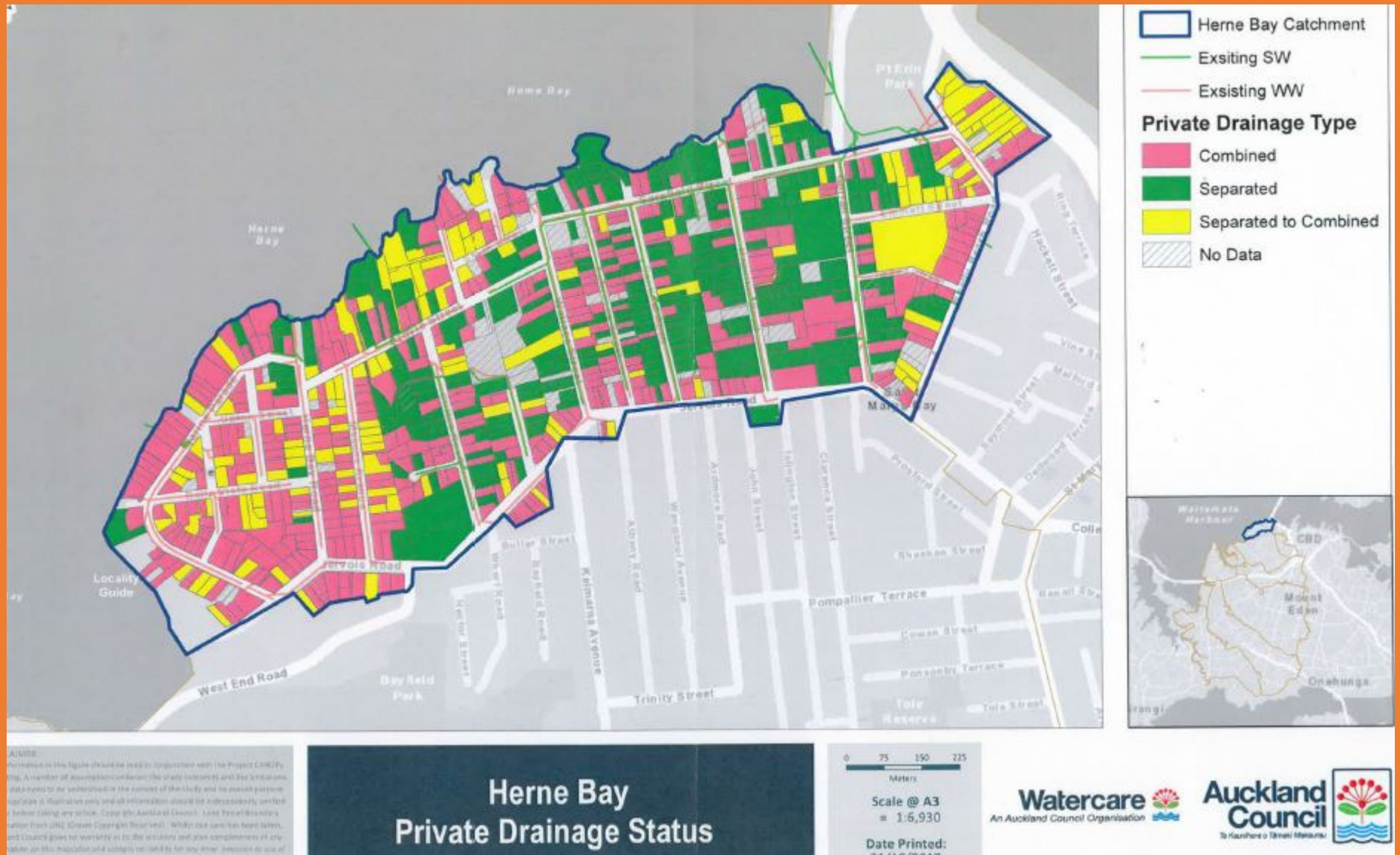
If the holding pipe fills it will overflow offshore in Herne Bay by the Harbour Bridge.

The SMBM project is expected to reduce overflows from over 60 to approximately 25 annually.

Overflows will continue in Bella Vista Reserve, Marine Parade Reserve, Herne Bay Beach, Home Bay and Hamilton Road Beach. Council has no current approved plans to deal with these overflows.

Recently a costing report for Council assessing full separation of wastewater from stormwater for Herne Bay and St Marys Bay has been estimated at \$33.5 or \$41 million depending on methodology.

Council Separation Map



HARBOUR POLLUTION – PROPOSED SOLUTION

Separation would have wastewater and stormwater transmitted in separate pipes.

Advantages of full separation are:

Elimination of sewage overflows in Herne Bay including overflows from the proposed new Harbour Bridge outfall.

A new piping network in Herne Bay and St Marys Bay.

No ugly pump-house in Pt Erin Park and no loss of recreational space.

All coastal Herne Bay benefits; not just Masefield Bay

HARBOUR POLLUTION – PROPOSED SOLUTION

Additionally there are general advantages. These include:

Cost effectiveness – similar cost to SMBM Project.

Much more modest piping in St Marys Bay (no holding pipe).

Provides extra capacity for an overburdened Combined Sewer System.

Reduced Treatment Plant inflows (wastewater/sewage only).

Council intends to implement the SMBM Project.

Questions

DON'T COME IN – IT'S TOO DIRTY TO SWIM!





HERNE BAY 1011

Herne Bay Residents Association Incorporated

**QUESTION TIME & OPPORTUNITY TO
LET US KNOW WHAT YOU THINK.**

THANK YOU FOR YOUR SUPPORT



Herne Bay Residents Association Incorporated

**JUST A REMINDER – CAN EVERYONE PLEASE
RENEW THEIR HBRAI SUBSCRIPTION!**